

1 2 3 4 5 6 7 8

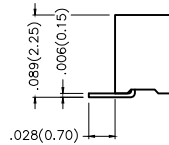
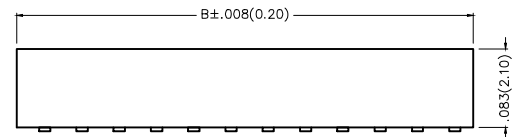
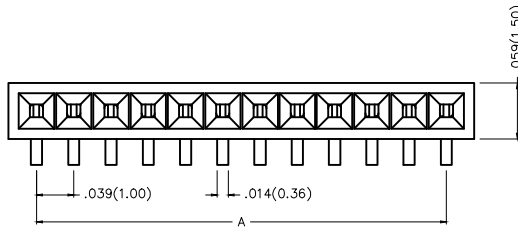
REV	LOCATIONS	DESCRIPTION	DATE	REVISER	APPD

Electrical

Current Rating: 1A AC(rms)/DC
 Voltage Rating: 250V AC(rms)/DC
 Contact Resistance: 20 mΩ Max
 Insulation Resistance: 1000 MΩ MIN
 Withstanding Voltage: 500V AC r.m.s
 Temperature Range—Operating: -40°C ~ +85°C

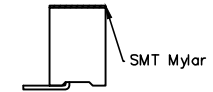
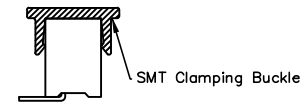
Material and Plating

Housing: PA6T(UL 94V-0)
 Contact Pin: Phosphor Bronze
 Plating: Gold Plated



Packing: M—Reel(With Cap)

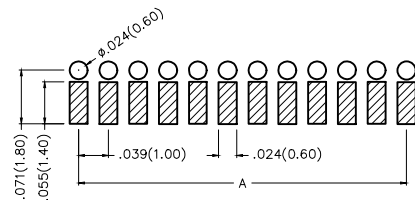
Packing: M1—Reel(With Mylar)



Ordering Information

FFH 100 08 — S XX S X XX 4 K6 XX
 1 2 3 4 5 6 7 8 9 10 11

1 Category FFH—Female Header	2 Series Number 100—Pitch 1.0mm	3 Distinction No. 08	4 Row Option S—Single row	5 Circuits XX	6 Entry Angle S—180° Vertical
7 Plating 1—Gold Plated	8 Thickness of Plating 00—Gold Flash 05—5μ" Custom plate available	9 Material—Resin 4—PA6T	10 Color—Resin K6—Black	11 Packaging M—Reel(With Cap) M1—Reel(With Mylar)	





Recommended P.C.Board Layout

<p>THIRD ANGLE PROJECTION</p>	GENERAL TOLERANCES (UNLESS SPECIFIED)		APPROVE BY FRANK	DATE 10/JUL/13	PART NO. FFH10008—SXXSXXX4K6XX	ITEM NO. FFH10008	<p>Leader Of Industry</p>
	X.±.012(0.30)	X.±5°	CHECKED BY CHERRY	DATE 10/JUL/13	TITLE Board to Board (Female Header) Pitch 1.0mm 180° Vertical (SMT)		
DESIGN UNITS Inch (metric)	X.X±.008(0.20)	.X'±2'	DRAWN BY JACOB	DATE 10/JUL/13	THIS DRAWING CONTAINS INFORMATION THAT IS PROPRIETARY TO TXGA INDUSTRIAL ELECTRONICS(S.Z)CO.,LTD AND SHOULD NOT BE USED WITHOUT WRITTEN PERMISSION		
SCALE 5:1	SIZE A4	X.XX±.006(0.15)					
		X.XXX±.004(0.10)					

1 2 3 4 5 6 7 8

REV	LOCATIONS	DESCRIPTION	DATE	REVISER	APPD

Circuits (n)	Part No.	Dimensions(in/mm)		Circuits (n)	Part No.	Dimensions(in/mm)	
		A	B			A	B
2	FFH10008-S02SXXX4K6X	.039(1.00)	.094(2.40)	27	FFH10008-S27SXXX4K6X	1.024(26.00)	1.079(27.40)
3	FFH10008-S03SXXX4K6X	.079(2.00)	.134(3.40)	28	FFH10008-S28SXXX4K6X	1.063(27.00)	1.118(28.40)
4	FFH10008-S04SXXX4K6X	.118(3.00)	.173(4.40)	29	FFH10008-S29SXXX4K6X	1.102(28.00)	1.157(29.40)
5	FFH10008-S05SXXX4K6X	.157(4.00)	.213(5.40)	30	FFH10008-S30SXXX4K6X	1.142(29.00)	1.197(30.40)
6	FFH10008-S06SXXX4K6X	.197(5.00)	.252(6.40)	31	FFH10008-S31SXXX4K6X	1.181(30.00)	1.236(31.40)
7	FFH10008-S07SXXX4K6X	.236(6.00)	.291(7.40)	32	FFH10008-S32SXXX4K6X	1.220(31.00)	1.276(32.40)
8	FFH10008-S08SXXX4K6X	.276(7.00)	.331(8.40)	33	FFH10008-S33SXXX4K6X	1.260(32.00)	1.315(33.40)
9	FFH10008-S09SXXX4K6X	.315(8.00)	.370(9.40)	34	FFH10008-S34SXXX4K6X	1.299(33.00)	1.354(34.40)
10	FFH10008-S10SXXX4K6X	.354(9.00)	.409(10.40)	35	FFH10008-S35SXXX4K6X	1.339(34.00)	1.394(35.40)
11	FFH10008-S11SXXX4K6X	.394(10.00)	.449(11.40)	36	FFH10008-S36SXXX4K6X	1.378(35.00)	1.433(36.40)
12	FFH10008-S12SXXX4K6X	.433(11.00)	.488(12.40)	37	FFH10008-S37SXXX4K6X	1.417(36.00)	1.472(37.40)
13	FFH10008-S13SXXX4K6X	.472(12.00)	.528(13.40)	38	FFH10008-S38SXXX4K6X	1.457(37.00)	1.512(38.40)
14	FFH10008-S14SXXX4K6X	.512(13.00)	.567(14.40)	39	FFH10008-S39SXXX4K6X	1.496(38.00)	1.551(39.40)
15	FFH10008-S15SXXX4K6X	.551(14.00)	.606(15.40)	40	FFH10008-S40SXXX4K6X	1.535(39.00)	1.591(40.40)
16	FFH10008-S16SXXX4K6X	.591(15.00)	.646(16.40)	41	FFH10008-S41SXXX4K6X	1.575(40.00)	1.630(41.40)
17	FFH10008-S17SXXX4K6X	.630(16.00)	.685(17.40)	42	FFH10008-S42SXXX4K6X	1.614(41.00)	1.669(42.40)
18	FFH10008-S18SXXX4K6X	.669(17.00)	.724(18.40)	43	FFH10008-S43SXXX4K6X	1.654(42.00)	1.709(43.40)
19	FFH10008-S19SXXX4K6X	.709(18.00)	.764(19.40)	44	FFH10008-S44SXXX4K6X	1.693(43.00)	1.748(44.40)
20	FFH10008-S20SXXX4K6X	.748(19.00)	.803(20.40)	45	FFH10008-S45SXXX4K6X	1.732(44.00)	1.787(45.40)
21	FFH10008-S21SXXX4K6X	.787(20.00)	.843(21.40)	46	FFH10008-S46SXXX4K6X	1.772(45.00)	1.827(46.40)
22	FFH10008-S22SXXX4K6X	.827(21.00)	.882(22.40)	47	FFH10008-S47SXXX4K6X	1.811(46.00)	1.866(47.40)
23	FFH10008-S23SXXX4K6X	.866(22.00)	.921(23.40)	48	FFH10008-S48SXXX4K6X	1.850(47.00)	1.906(48.40)
24	FFH10008-S24SXXX4K6X	.906(23.00)	.961(24.40)	49	FFH10008-S49SXXX4K6X	1.890(48.00)	1.945(49.40)
25	FFH10008-S25SXXX4K6X	.945(24.00)	1.000(25.40)	50	FFH10008-S50SXXX4K6X	1.929(49.00)	1.984(50.40)
26	FFH10008-S26SXXX4K6X	.984(25.00)	1.039(26.40)				

 THIRD ANGLE PROJECTION	GENERAL TOLERANCES (UNLESS SPECIFIED)		APPROVE BY FRANK	DATE 10/JUL/13	PART NO. FFH10008-SXXX4K6XX	ITEM NO. FFH10008	 Leader Of Industry	
	X.±.012(0.30)	X.±5'	CHECKED BY CHERRY	DATE 10/JUL/13	TITLE Board to Board (Female Header) Pitch 1.00mm 180° Vertical (SMT)			REV 0
	X.XX±.008(0.20)	.X'±2'	DRAWN BY JACOB	DATE 10/JUL/13	THIS DRAWING CONTAINS INFORMATION THAT IS PROPRIETARY TO TXGA INDUSTRIAL ELECTRONICS(S.Z)CO.,LTD AND SHOULD NOT BE USED WITHOUT WRITTEN PERMISSION			SHEET NO. 2/2
	X.XX±.006(0.15)	.XX'±1'						
SCALE 5:1	SIZE A4	X.XXX±.004(0.10)	.XXX'±0.5'					